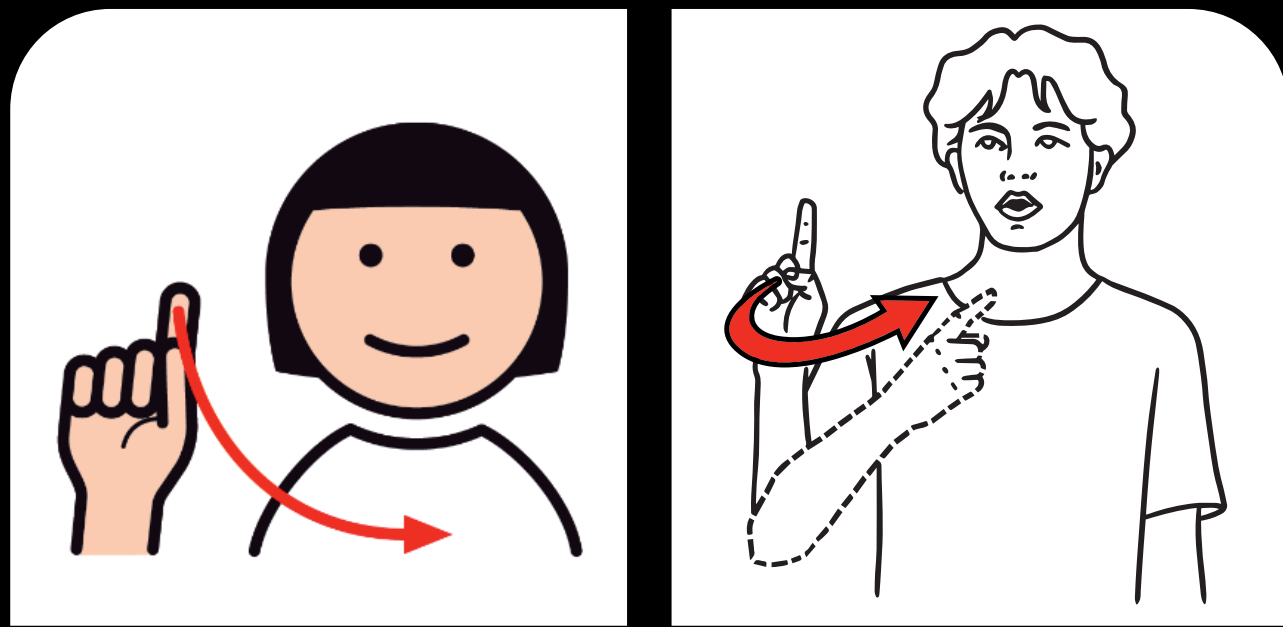


Zeig mal!

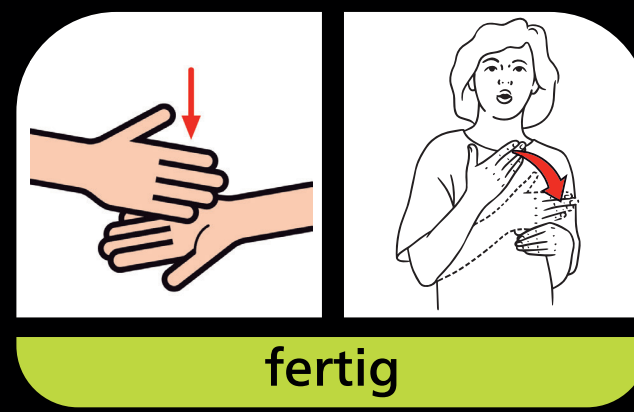
Symbol

Gebärde

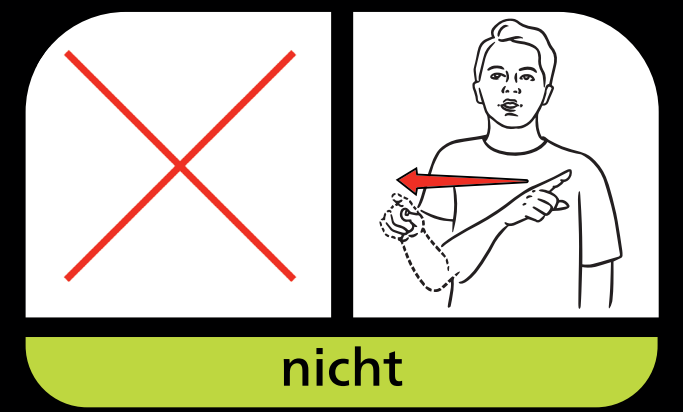


nochmal

Wort



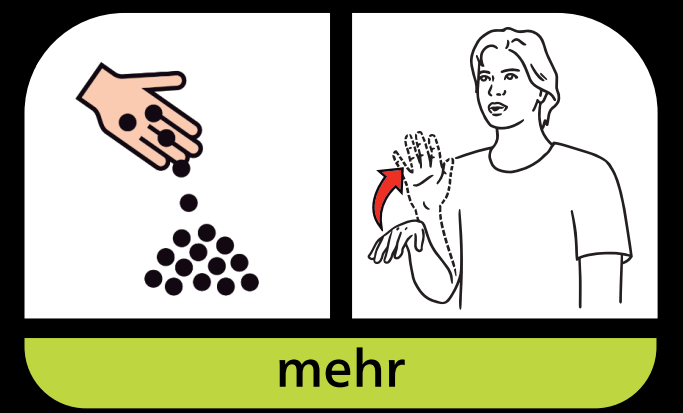
fertig



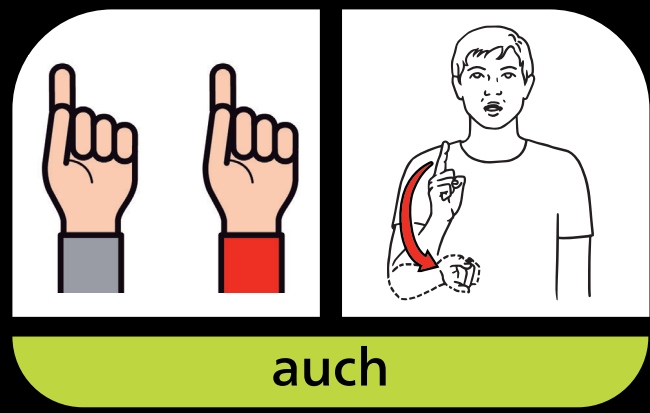
nicht



stopp



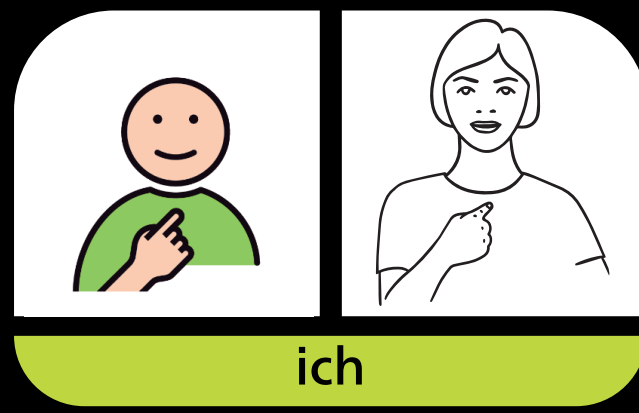
mehr



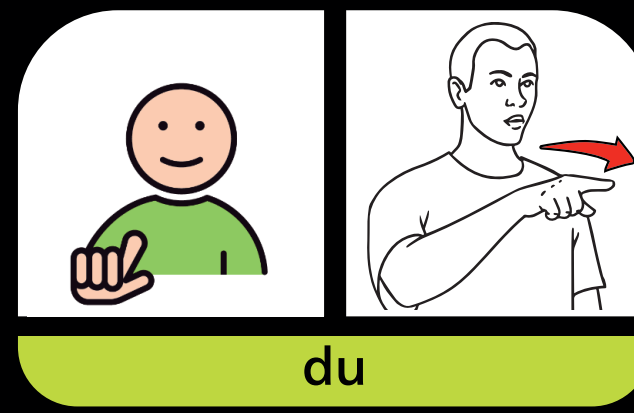
auch



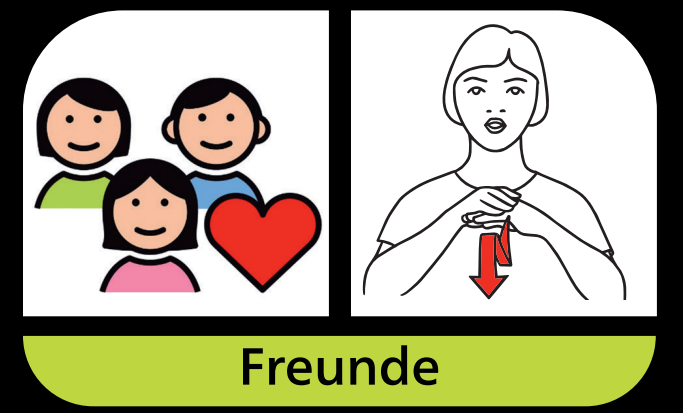
etwas anderes



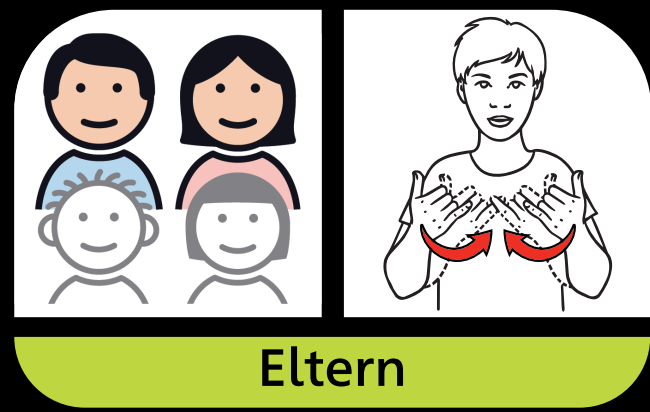
ich



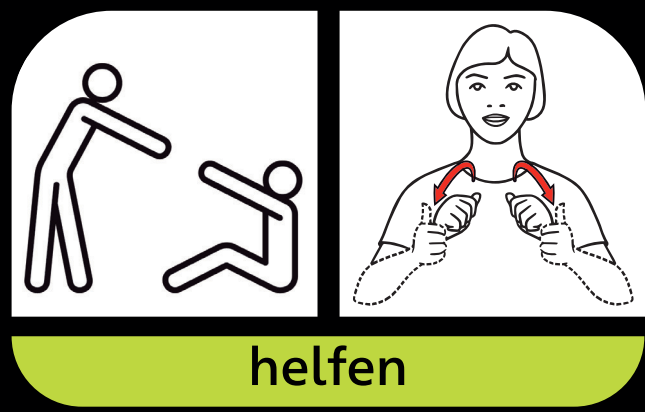
du



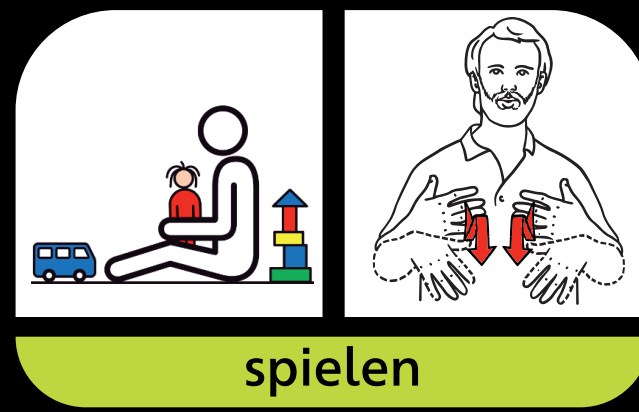
Freunde



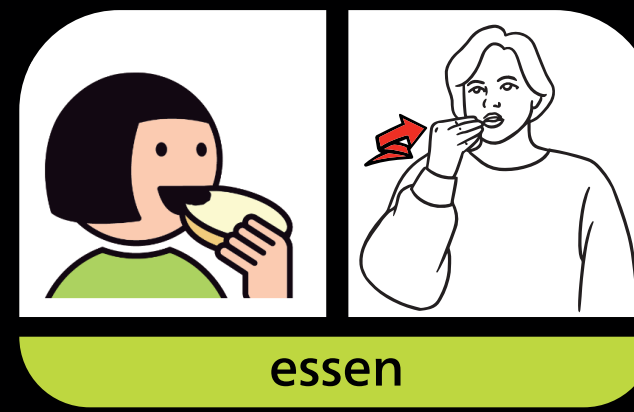
Eltern



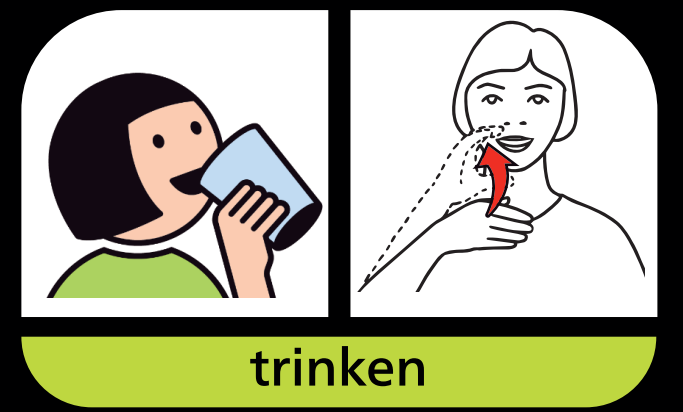
helfen



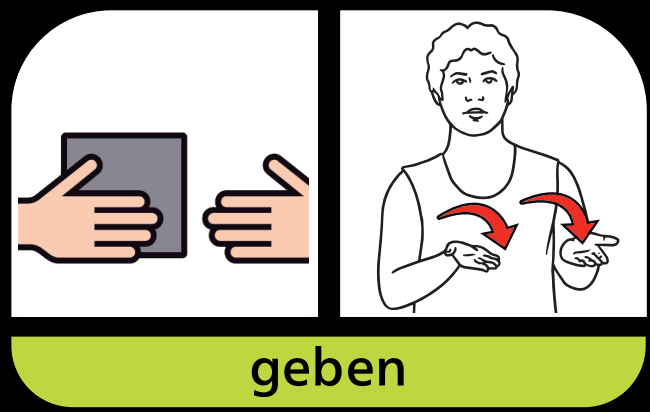
spielen



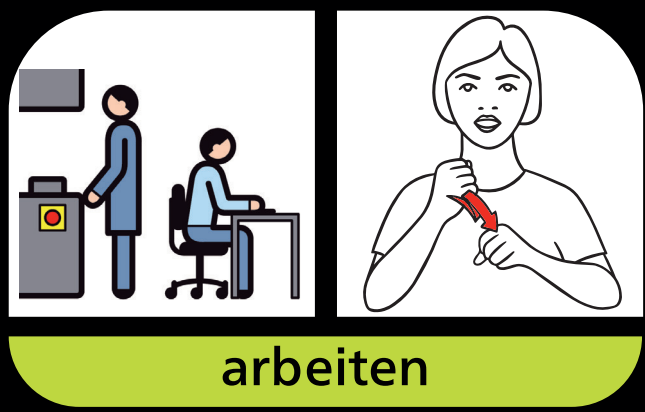
essen



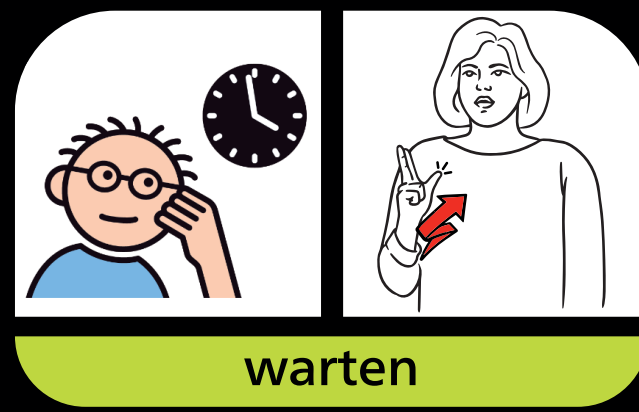
trinken



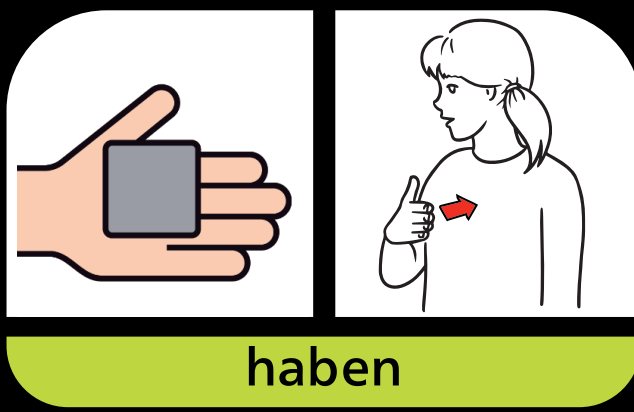
geben



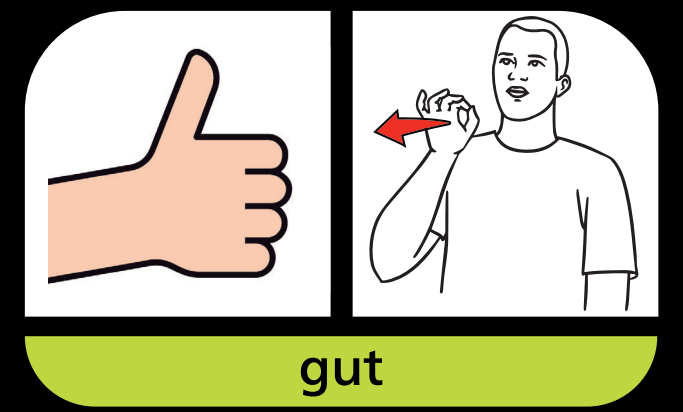
arbeiten



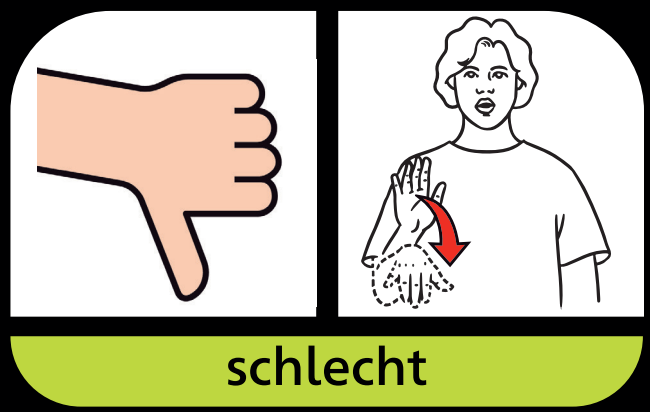
warten



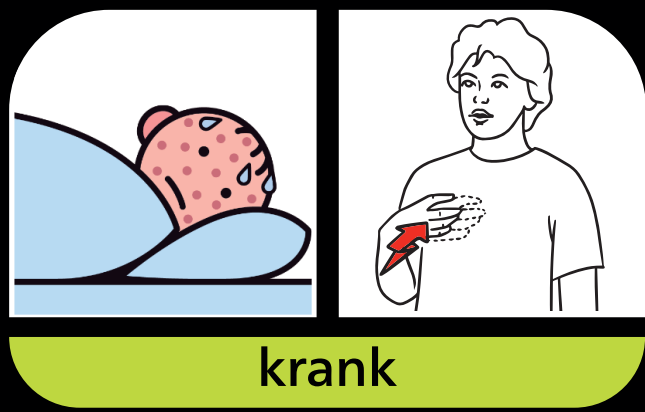
haben



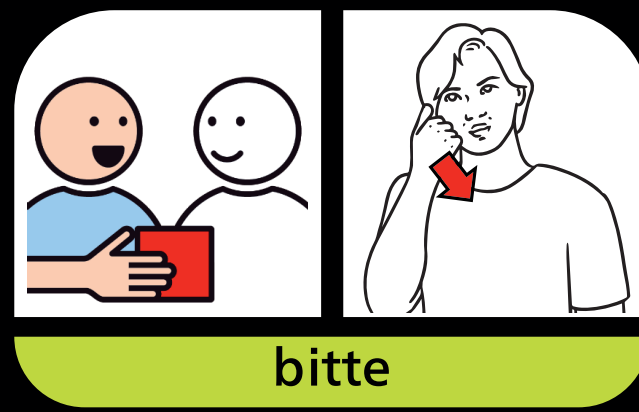
gut



schlecht



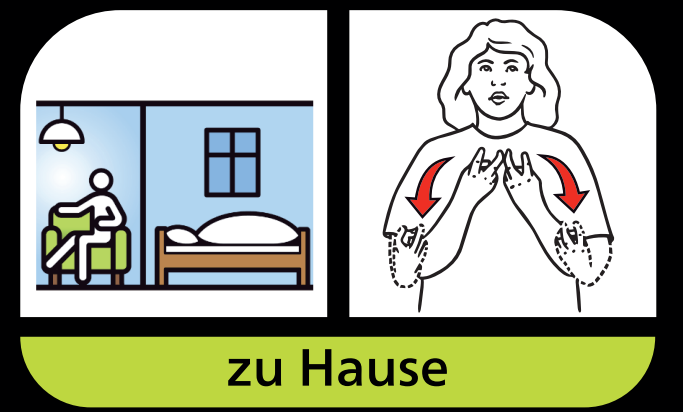
krank



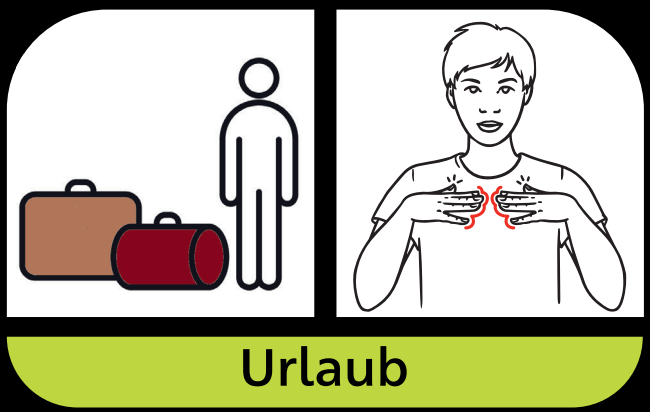
bitte



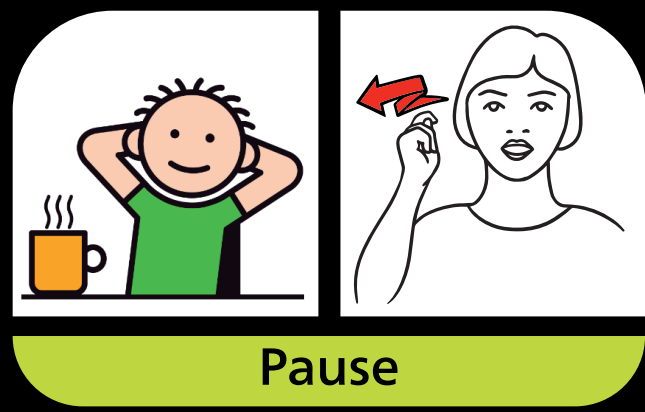
danke



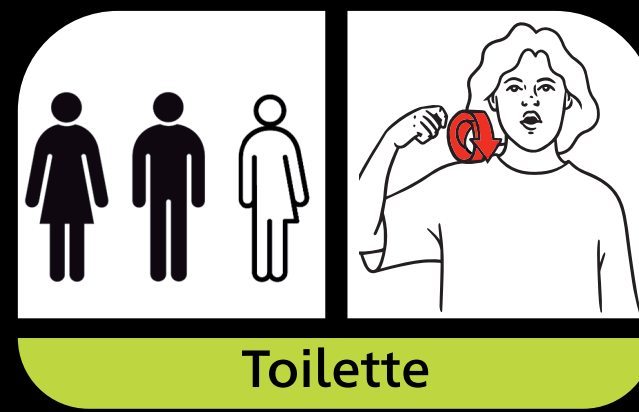
zu Hause



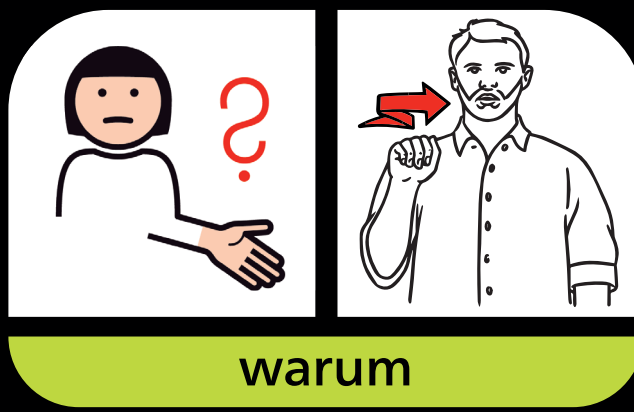
Urlaub



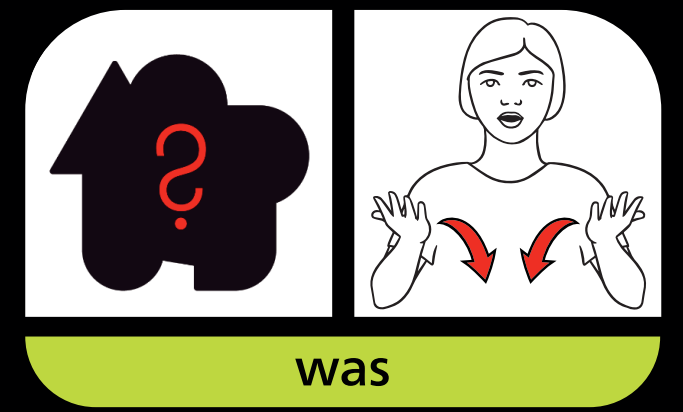
Pause



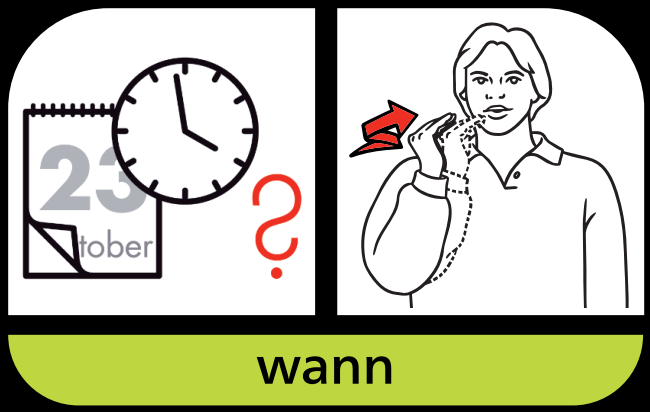
Toilette



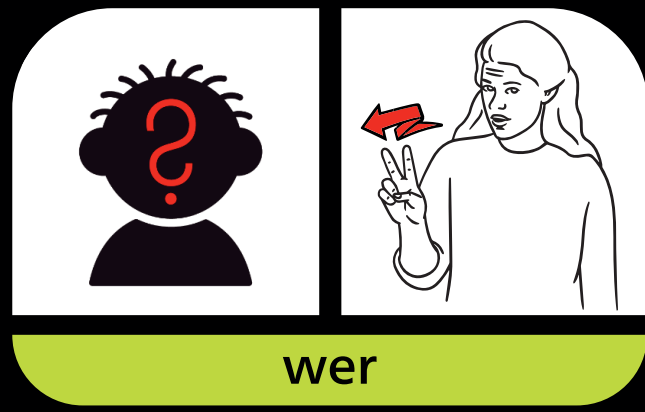
warum



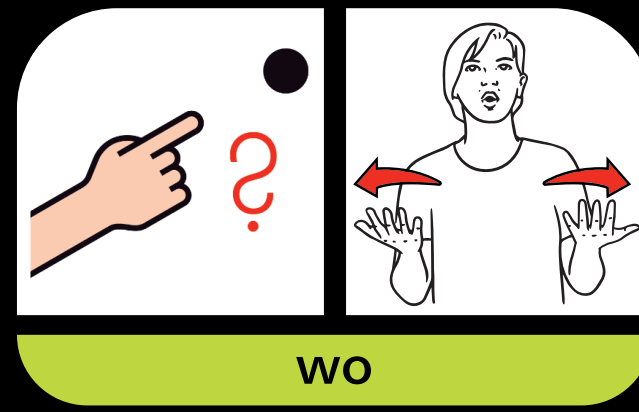
was



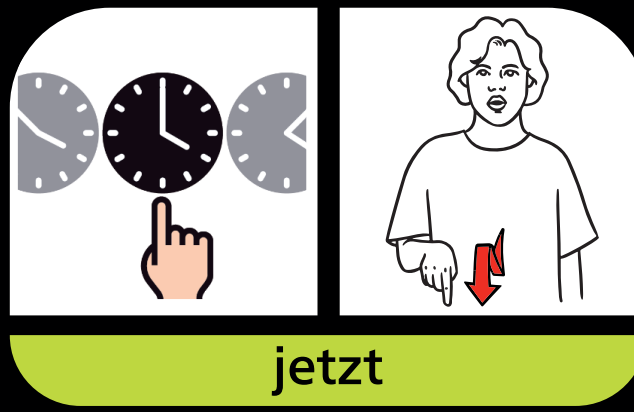
wann



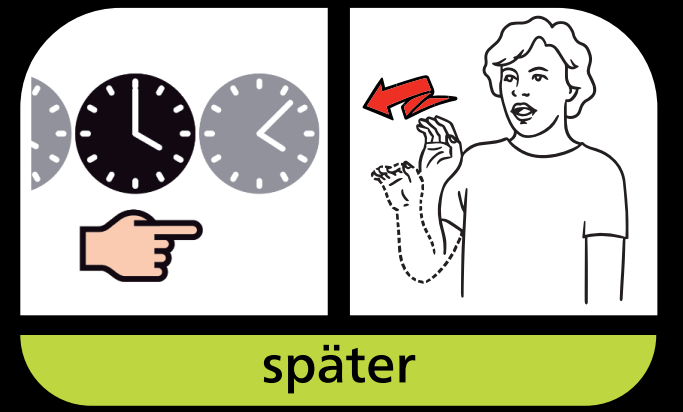
wer



wo

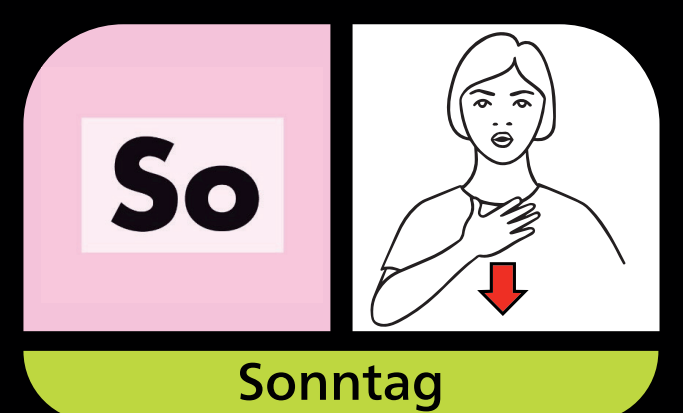
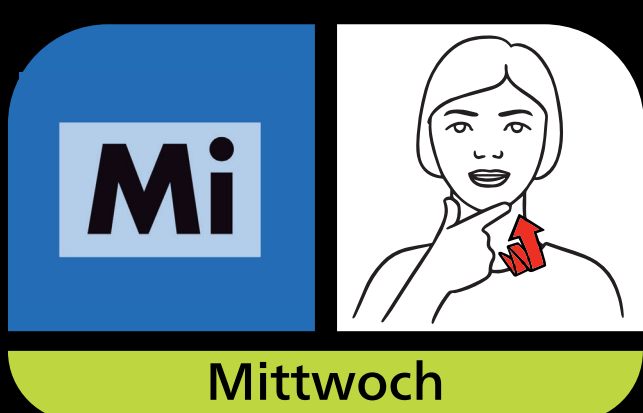
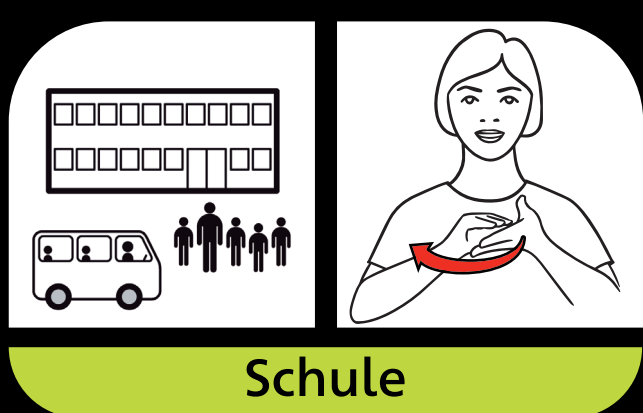
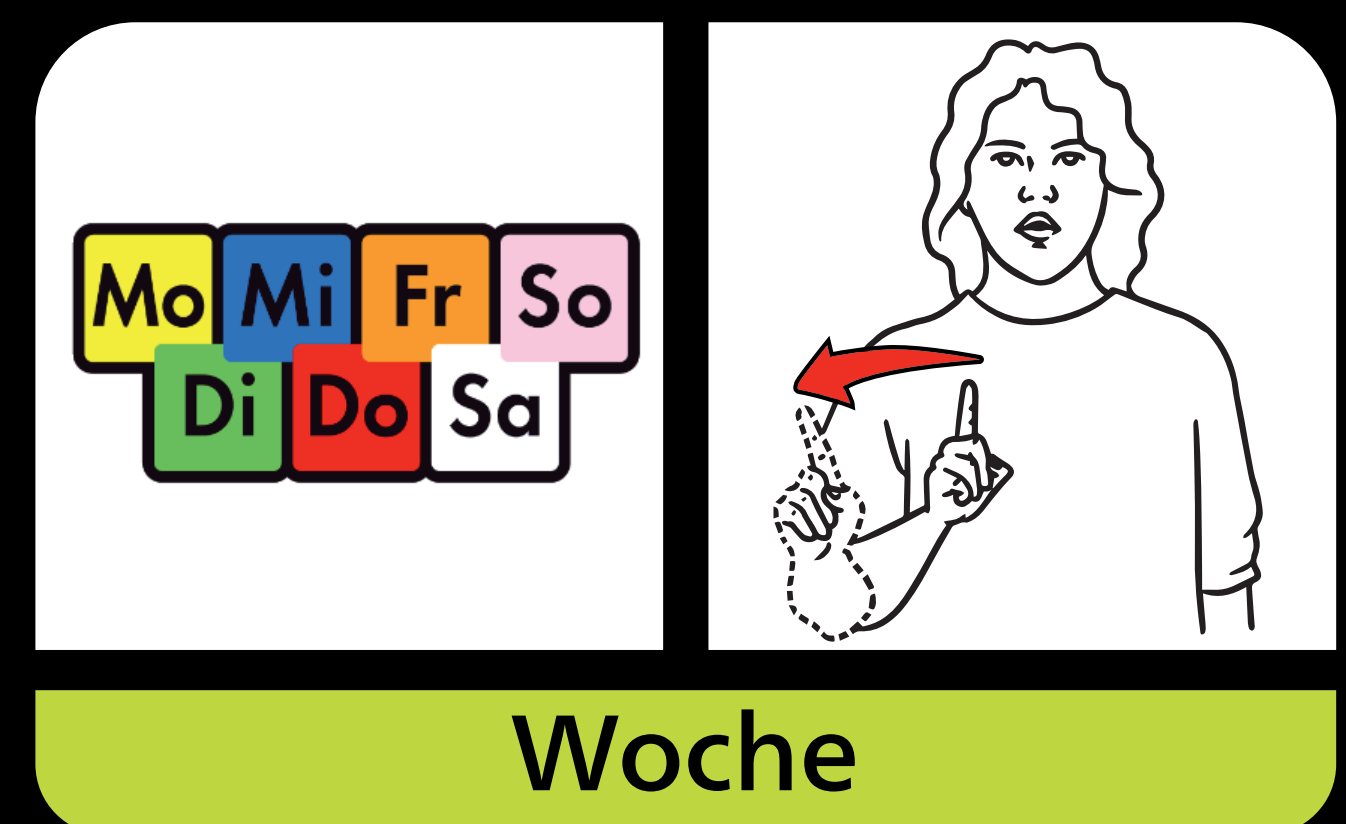
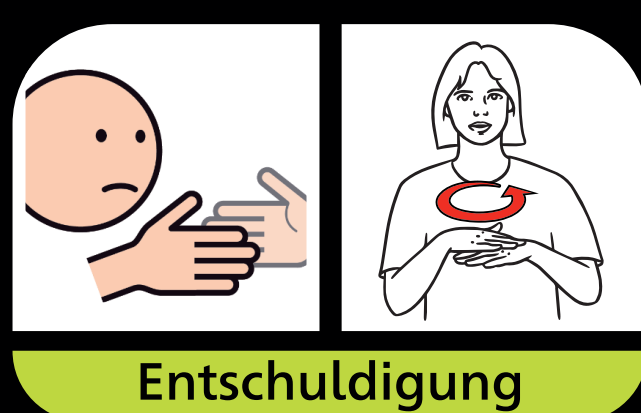
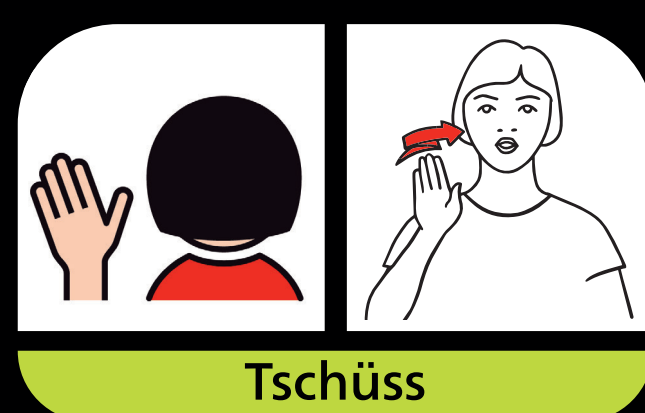
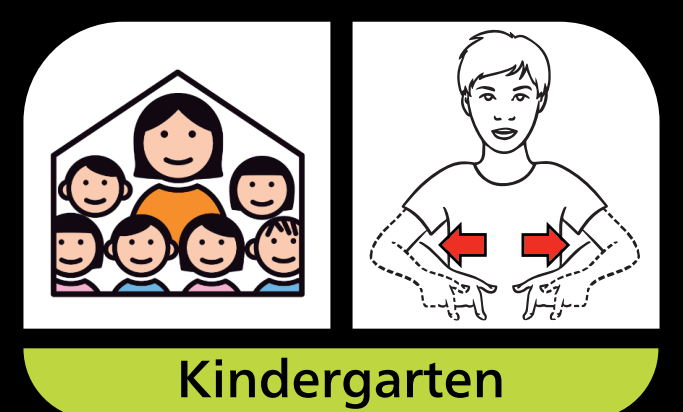
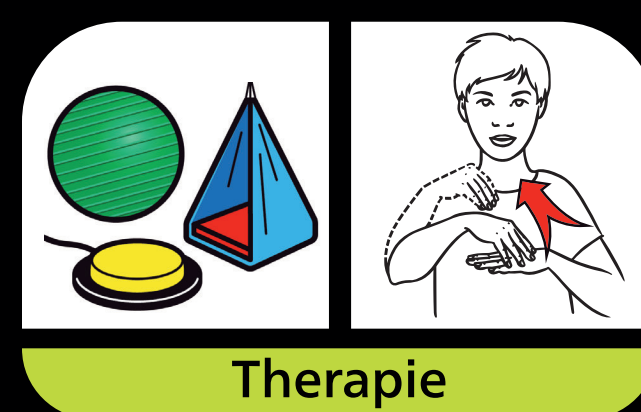
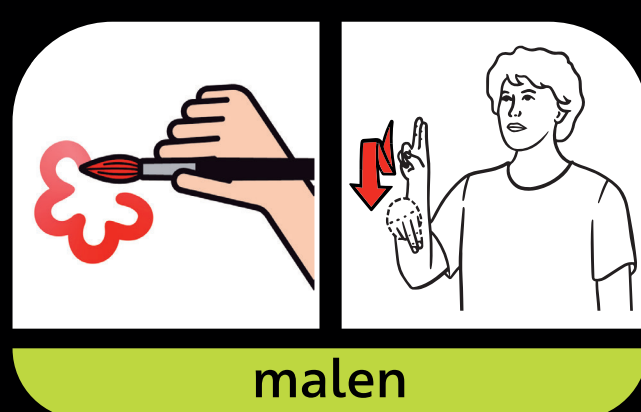
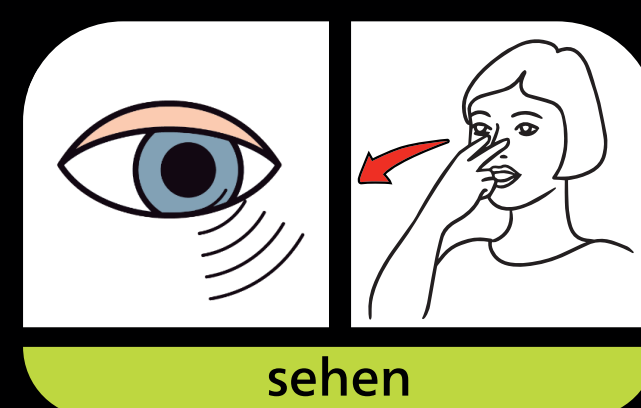
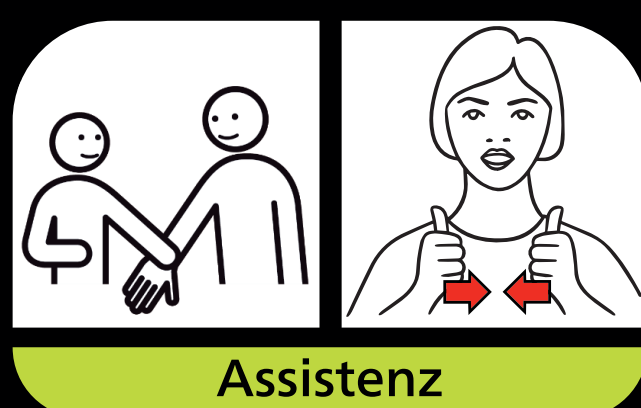
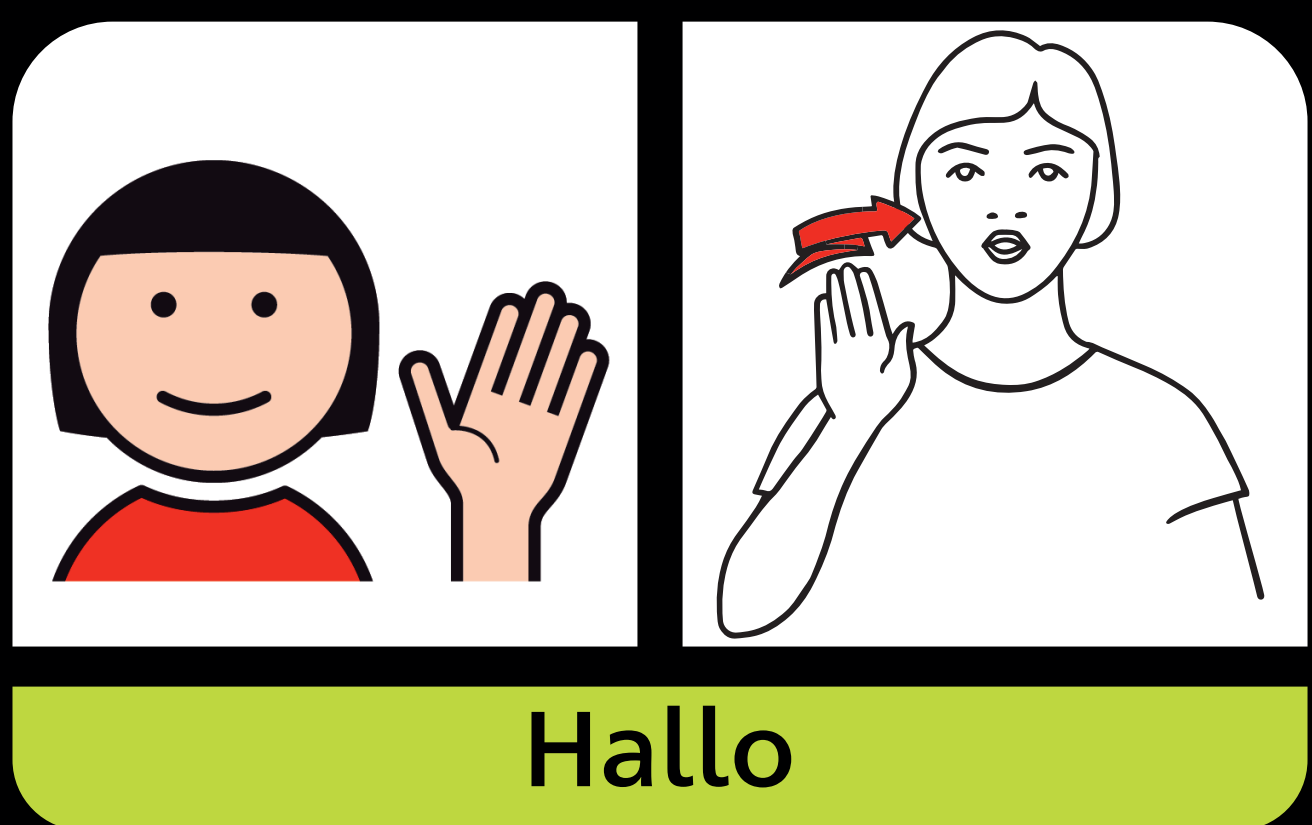
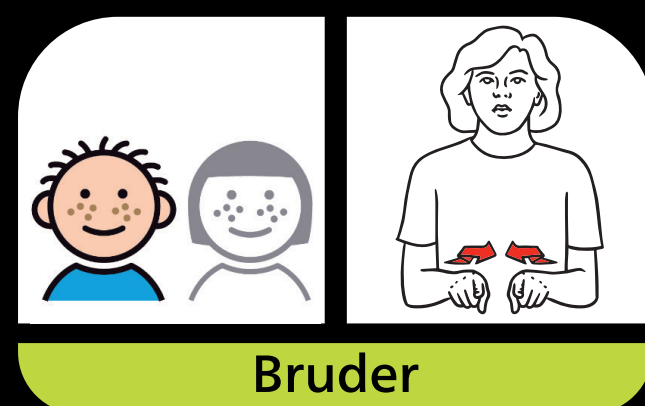
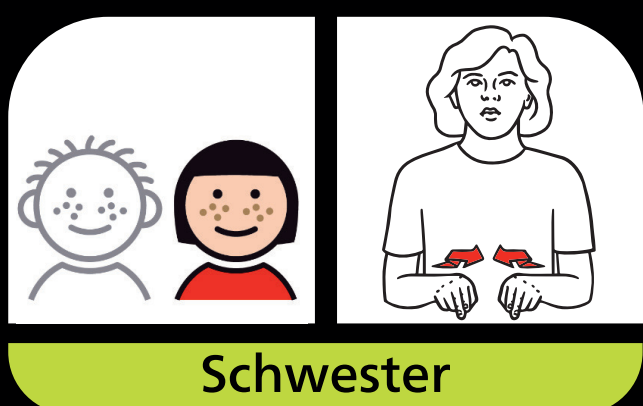
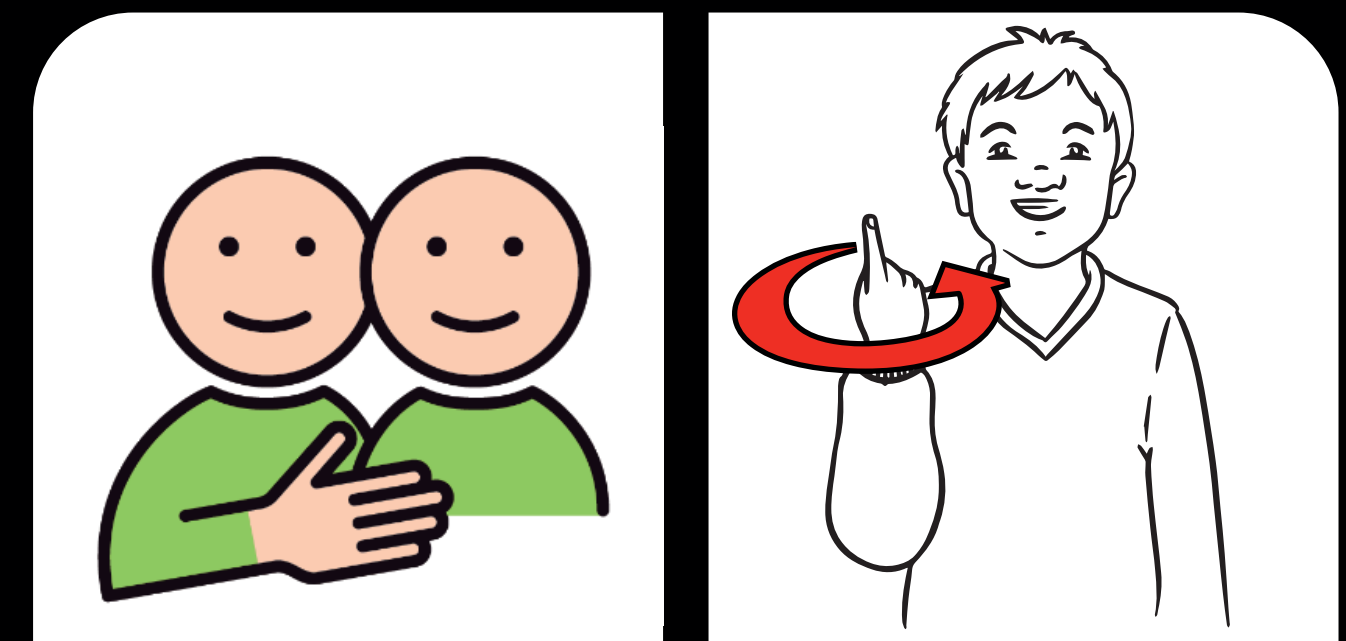
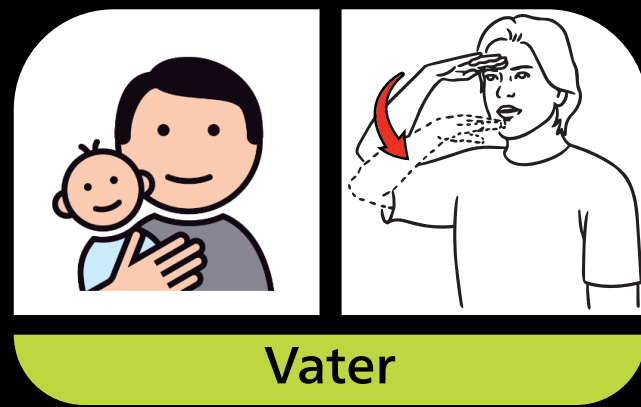
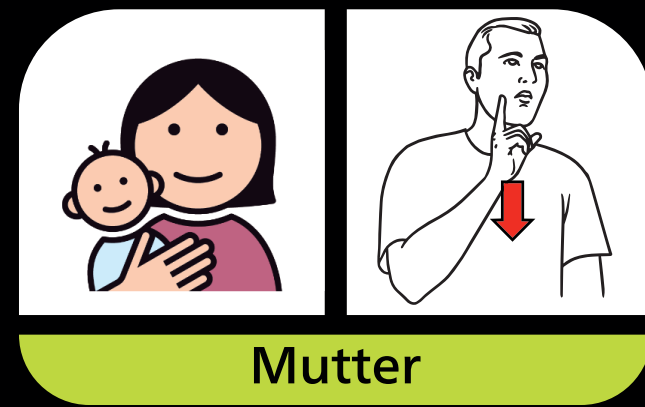
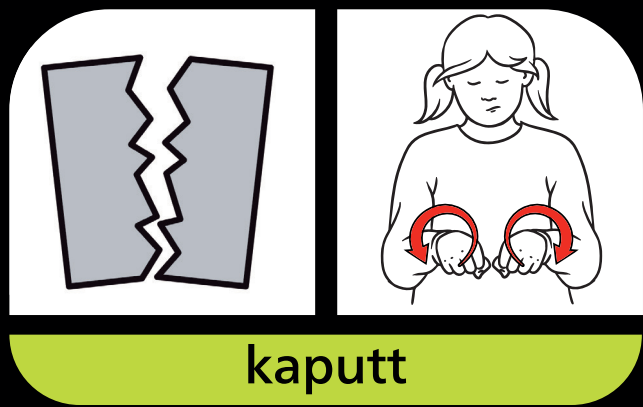
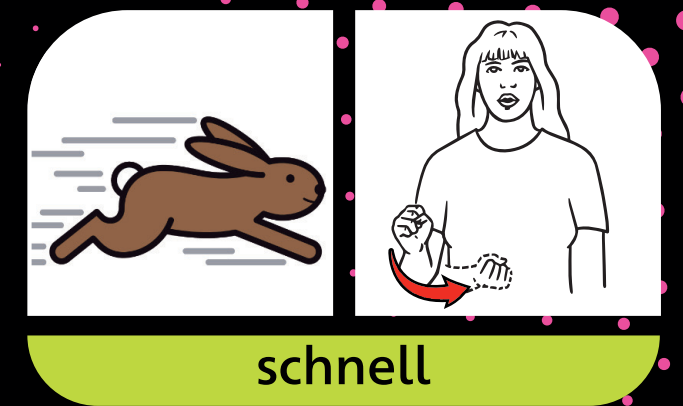
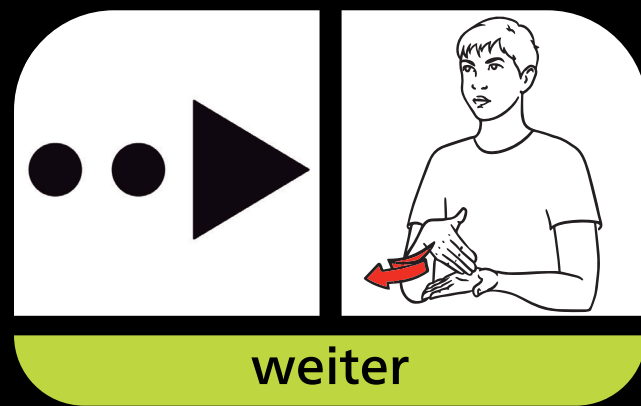
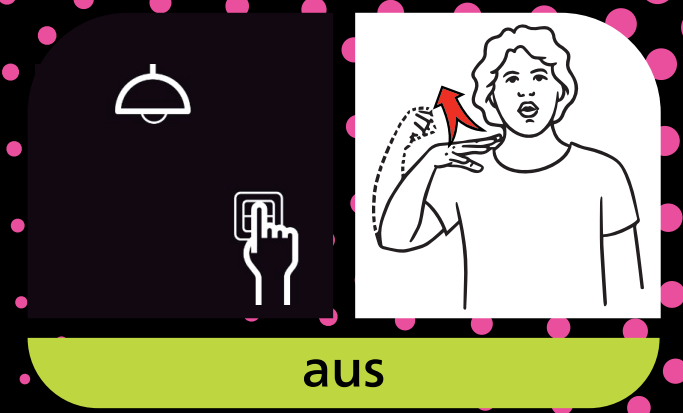
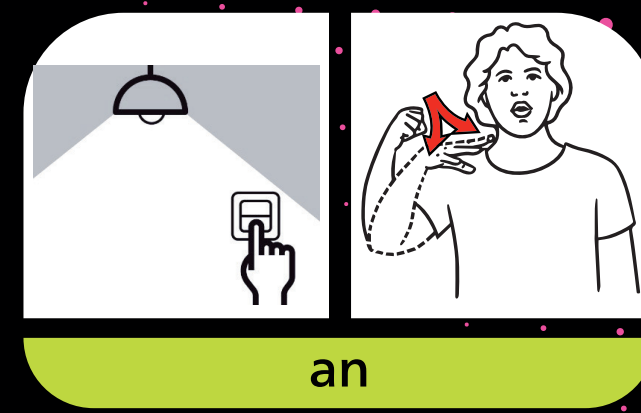
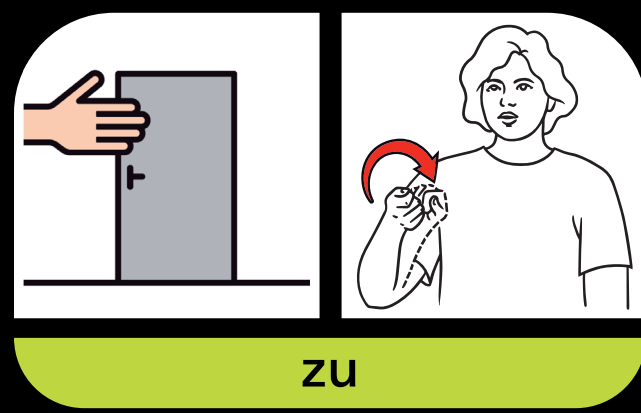
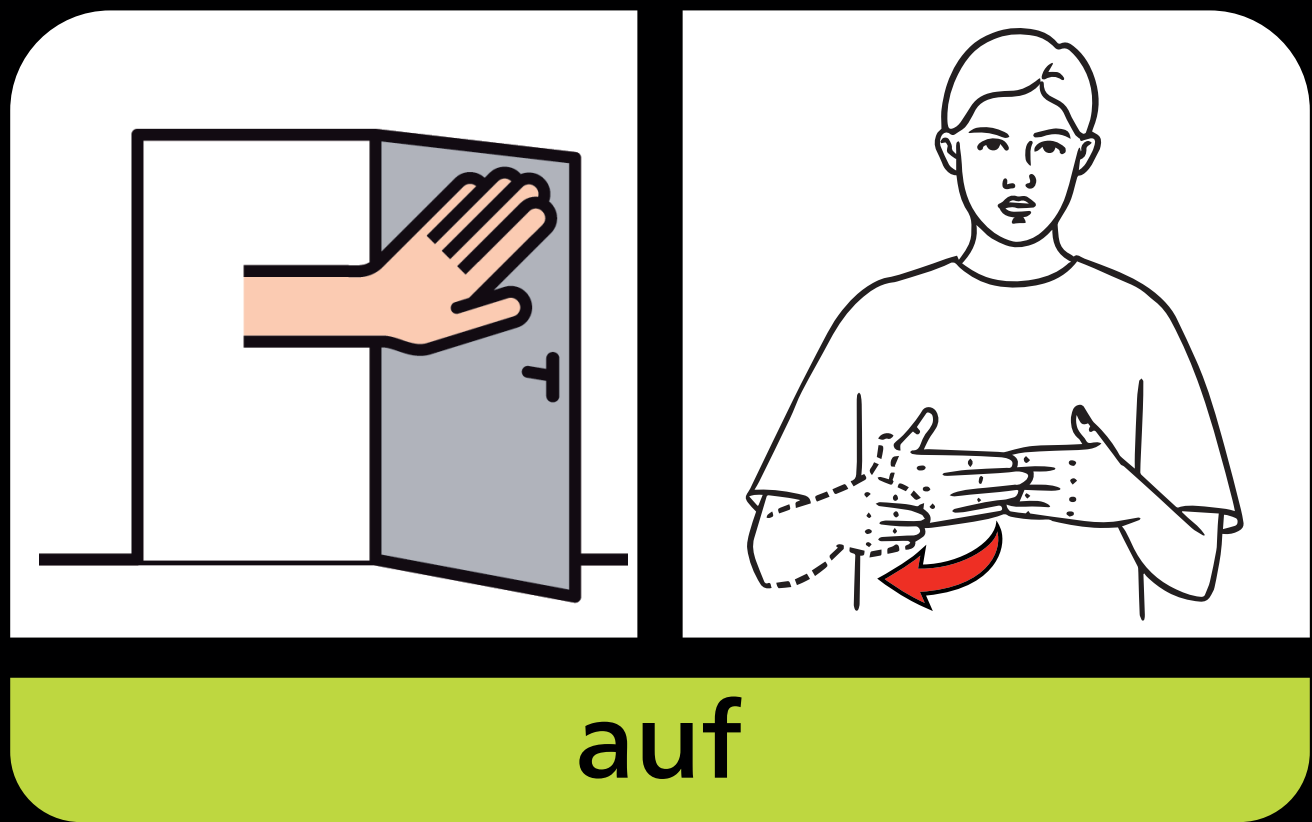


jetzt



später





Unterstützte Kommunikation - Teilhabe stärken!
wird getragen von:

Alsterarbeit gGmbH, Alsterdorf Assistenz Ost gGmbH, Alsterdorf Assistenz West gGmbH, Bereich Bildung, Evangelisches Krankenhaus Alsterdorf gGmbH, Berufsfachschule für Logopädie, Fachschule für soziale Arbeit Alsterdorf, Sengemann Institut für Medizin und Inklusion - SIMI, Theravitalis Alsterdorf, Werner Otto Institut gGmbH

Redaktion: ESA UK-Arbeitskreis

Copyright Metacom: METACOM Symbole
© Annette Kitzinger
Copyright Strichzeichnungen: Institut für Deutsche Gebärdensprache / Universität Hamburg

